



SG Controls & Switchgear (P) Ltd. was established in the year 1982 at Delhi as a Small-Scale Industry, manufacturing Industrial Plugs, sockets & Panel Accessories.

Over the years company has been growing at a rapid pace, adding newer products to its Portfolio, viz. MCB, DB, ELCB, RCCB, HRC Fuse Link, Fuse Holders, Change Over Switch, Main Switch, Rotary Switch, Modular Accessories, Ampere Meter, Volt Meter, CTS, Energy Meter & Motor Starter.

This growth has been possible due to the clear vision & dynamic leadership of our Directors Mr. M.L. Shama. Today, we are a Multi Product & Multi Locational Company, offering an extensive range of Electrical Wiring Accessories, Circuit Protection Devices, Control & Signaling Devices to the Low Voltage Industrial & Domestic segment of the Market. SG Control's Products are tested at CPRI, RTC, ERDA and IIT Mumbai & Have been approved by Leading Institutions in India & Abroad.

An ISO 9001:2000 Company, SG Controls is poised for a brighter future, supported by its highly qualified & specialist Technical, R & D, Manufacturing, Marketing Team, making its products the preferred brand for the specifiers like Architects, Electrical Consultants, Builders, Industrial & Contracting Professionals & the Trade.

Come - Join hands with SG Controls, the company that sets the Golden Standards!



OUR PRODUCT



Control & Signaling Devices Q22.5mm

METER, CT, BUZZER, HOOTER, R.F

PENDING PUSH BUTTON STATION

LIMIT SWITCH

FOOT SWITCH

Complete Electrical Solutions Industrial
USE ONLY 
Marked Products



HRC FUSE LINKS FOR INDUSTRIAL APPLICATIONS



Type - SGNS Fuse Link with Staggered Tags 415 V AC Confirm to IS : 13703 IEC 269

Rating Amp.	Cat No.	Std. Pkg Nos.	Unit Price (Rs.)
2	SG-NS 2	20	37
4	SG-NS 4	20	37
6	SG-NS 6	20	37
10	SG-NS 10	20	37
16	SG-NS 16	20	37
20	SG-NS 20	20	37
25	SG-NS 25	20	37
32	SG-NS 32	20	37

Central Tags (2 hole fixing - Bolted) Confirm to IS : 13703 IEC 269

Rating Amp.	Cat No.	Std. Pkg Nos.	Unit Price (Rs.)
80	SG-TC 80	6	199
100	SG-TC 100	6	199
125	SG-TF 125	6	294
160	SG-TF 160	6	294
200	SG-TF 200	6	294
250	SG-TF 250	6	294
315	SG-TKF 315	6	548

Type SGTSA - 415V AC Offset Tags (2 hole fixing - Bolted) Confirms to IS : 13703 IEC 269

Rating Amp.	Cat No.	Std. Pkg Nos.	Unit Price (Rs.)
6	SG-TSA 6	6	58
10	SG-TSA 10	6	58
16	SG-TSA 16	6	58
20	SG-TSA 20	6	58
25	SG-TSA 25	6	58
32	SG-TSA 32	6	58
36	SG-TSS 36	6	72
50	SG-TSS 50	6	73
63	SG-TSS 63	6	73
80	SG-TSDS 80	6	133
100	SG-TSDS 100	6	133
125	SG-TSDS 125	6	133
80	SG-TSD 80	6	145
100	SG-TSD 100	6	145
125	SG-TSD 125	6	145
125	SG-TSFP 125	6	233
160	SG-TSFP 160	6	233
200	SG-TSFP 200	6	233

Central Tags (2 hole fixing - Bolted) Confirm to IS : 13703 IEC 269

Rating Amp.	Cat No.	Std. Pkg Nos.	Unit Price (Rs.)
80	SG-TSDC 80	6	160
100	SG-TSDC 125	6	160
125	SG-TSF 125	6	261
160	SG-TSF 160	6	261
200	SG-TSF 200	6	261
250	SG-TSF 250	6	282
250	SG-TSK 250	6	408
315	SG-TSK 315	3	408
400	SG-TSMS 400	3	720



Type SGTIA - 660V AC Offset Tags (2 hole fixing - Bolted) Confirms to IS : 13703 IEC 269

Rating Amp.	Cat No.	Std. Pkg Nos.	Unit Price (Rs.)
8	SG-TIA 8	10	73
10	SG-TIA 10	10	73
16	SG-TIA 16	10	73
20	SG-TIA 20	10	73
25	SG-TIA 25	10	73
32	SG-TIA 32	10	73
36	SG-TIS 36	10	83
50	SG-TIS 50	10	83
63	SG-TIS 63	10	83
80	SG-TCP 80	6	191
100	SG-TCP 100	6	191
125	SG-TCP 125	6	217
125	SG-TFP 125	6	294
160	SG-TFP 160	6	294
200	SG-TFP 200	6	294

Fuse Links Type SG-FR 415V, 50Hz Confirms to IS : 13703 IEC 269

Rating Amp.	Cat No.	Std. Pkg Nos.	Unit Price (Rs.)
2A	SG-FR 2A	20	63
4A	SG-FR 4A	20	63
6A	SG-FR 6A	20	63
8A	SG-FR 8A	20	63
10A	SG-FR 10A	20	63
16A	SG-FR 16A	20	63
20A	SG-FR 20A	20	63
25A	SG-FR 25A	20	63
32A	SG-FR 32A	20	63
40A	SG-FR 40A	20	79
50A	SG-FR 50A	20	79
63A	SG-FR 63A	20	79

HRC Fuses (DIN Type) Upto 630A, 415V, AC, 50Hz Breaking Capacity 80 kA Confirms to IS : 13703 IEC 269

Size	Rating Amp.	Cat No.	Std. Pkg (Nos.)	Unit Price (Rs.)
00'	6 AMP	SGF 6	3	227
00'	10 AMP	SGF 10	3	227
00'	16 AMP	SGF 16	3	227
00'	20 AMP	SGF 20	3	227
00'	25 AMP	SGF 25	3	227
00'	32 AMP	SGF 32	3	227
00'	40 AMP	SGF 40	3	227
00'	50 AMP	SGF 50	3	227
00'	63 AMP	SGF 63	3	227
00'	80 AMP	SGF 80	3	227
00'	100 AMP	SGF 100	3	227
00'	125 AMP	SGF 125	3	227
00'	160 AMP	SGF 160	3	281
1'	63 AMP	SGF 63	3	361
1'	80 AMP	SGF 80	3	361
1'	100 AMP	SGF 100	3	361
1'	125 AMP	SGF 125	3	361
1'	160 AMP	SGF 160	3	368
1'	200 AMP	SGF 200	3	384
1'	250 AMP	SGF 250	3	394
1'	315 AMP	SGF 315	3	421
2'	200 AMP	SGF 200	3	430
2'	250 AMP	SGF 250	3	474
2'	315 AMP	SGF 315	3	526
2'	400 AMP	SGF 400	3	574
3'	315 AMP	SGF 315	1	657
3'	400 AMP	SGF 400	1	707
3'	500 AMP	SGF 500	1	760
3'	630 AMP	SGF 630	1	803
3'	800 AMP	SGF 800	1	868



CONTROL & SIGNALLING DEVICES Ø 22.5mm & FOOT SWITCH

CONTACT BLOCKS

CM/L 9338183

Description	Colours	Cat No.	Price	Pack
CONTACT BLOCK with 1 No.	GREEN	SG-AO	46	50
CONTACT BLOCK with 1 Nc.	RED	SG-AC	46	50

PUSH BUTTON STATION IP54, IP55, IP65

DIE CAST Aluminium housing
With Flush Knob & 1 NO or NC Blocks

ONE WAY	GREY	SGPBS-1	409	1
ONE WAY (with stayput)		SGPBS-1S	467	1
TWO WAY	GREY	SGPBS-2	579	1
TWO WAY (with stayput)		SGPBS-2S	634	1
THREE WAY	GREY	SGPBS-3	752	1
FOUR WAY	GREY	SGPBS-4	963	1
SIX WAY	GREY	SGPBS-6	1440	1
EIGHT WAY	GREY	SGPBS-8	1780	1

PENDENT PUSH BUTTON STATION IP54, IP55, IP65

DIE CAST Aluminium housing with
Flush Knob & 1 NO + NC Blocks

		Cat No.	Price	Pack
ONE WAY	GREY	SGPPBS-1	552	1
TWO WAY	GREY	SGPPBS-2	826	1
THREE WAY	GREY	SGPPBS-3	1047	1
FOUR WAY	GREY	SGPPBS-4	1328	1
FIVE WAY	GREY	SGPPBS-5	1607	1
SIX WAY	GREY	SGPPBS-6	1918	1
EIGHT WAY	GREY	SGPPBS-8	2376	1
TEN WAY	GREY	SGPPBS-10	2921	1
TWELVE WAY	GREY	SGPPBS-12	3638	1

EMPTY BOX FOR PUSH BUTTON STATION IP54, IP55, IP65

ONE WAY	GREY	SG PBSMT-1	352	1
TWO WAY	GREY	SG PBSMT-2	444	1
THREE WAY	GREY	SG PBSMT-3	549	1
FOUR WAY	GREY	SG PBSMT-4	682	1

ACCESSORIES

Filament Bulb BA9S - 130V, 48V, 24V		SGBLB	26	100
Spare Lens suitable for Pilot Lights	R,G,A,B,C	SGPL-SL	14	50
Complete Lens with metal holder for Pilot Lights	R,G,A,B,C	SGPL-CL	58	10
Complete Lens with metal holder for Luminous Selector Knob	R,G,A,B,C	SGLF-CL	66	10
Spare Boot suitable For Booted Actuator		SGLF-LSCL	133	10
Legend Plate with inscription ON, OF, START		SGAB-SB	29	50
STOP, FORWARD, REVERSE, UP, DOWN, RESET, Adaptor for Assembly of 22.0mm in 30.5mm		SG-LP	10	100
		SGADOP	12	100

Note : DC LED/PILOT LIGHT PRICE RS. 10/- EXTRA* Denotes the various colour of knobs & Lenses * R-Red, G-Green, A-Amber
BL-Black, B-Blue, Y-Yellow, W-White, C-Clear * See Accessories on Page No. 8

FOOT SWITCH / Aluminium casting powder coated

Description	Cat No.	Price	Pack
10A/250V	SG/FSB	2071	1
1 NO + 1 NC	SG/FSM	612	1
	SG/FSS	543	1

Element for SG/FSB 1NO+1NC FSB-E1 Rs. 165.00/- Element for SG/FSB 2NO+2NC FSB-E2 Rs. 283/-

LED LIGHT 022MM BUZZER TYPE SG-AD22 (220VAC)

Cat No.	Price (Rs.)	Std. Pkg.	(Note Voltage)
SG-AD22-22DS RED/GREEN/YELLOW	58	10/500	12VDC/24VDC/110VAC
SG-AD22-22DS BLUE/WHITE	74	10/500	380VAC/415VAC

ENCLOSURE FOR PUSH BUTTON TYPE EMPTY (nylon pa66)

Cat No.	Price (Rs.)	Std. Pkg.
SGX-1	72	100
SGX-2	77	100
SGX-3	138	75
SGX-4	187	50



B.P.L. Type Current Transformers 5VA, 10VA Class 10 as per IS:2705/92

ABS Moulding upto 600/5A

Rating	R. BURDEN IN VA	Unit Price Rs.
30, 50, 60, 75, 100, 150, 200 / 5A	15VA	405
30, 50, 60, 75, 100, 150, 200 / 5A	5VA	306
250 / 5A	10VA	328
300 / 5A	10VA	328
400 / 5A	15VA	359
500, 600 / 5A	15VA	387
800 / 5A	15VA	452
1000 / 5A	15VA	466
1200 / 5A	15VA	512
1500, 1600 / 5A	15VA	673
2000, 2500 / 5A	15VA	797
3000 / 5A	15VA	1285
4000 / 5A	15VA	1838
5000 / 5A	15VA	2204




CAM OPERATED ROTARY SWITCHES

Switching	Pole	Cat No.	10 Amps. (Rs.)	16 Amps. (Rs.)	25 Amps. (Rs.)	32 Amps. (Rs.)	40 Amps. (Rs.)	63 Amps. (Rs.)
ON-OFF 	1	SG 195	202	210	218	284	383	440
	2	SG 198	235	244	276	342	449	547
	3	SG 197	267	284	352	381	521	728
	4	SG 196	291	301	458	479	580	891
TWO WAY WITH NO OFF 	1	SG 037	251	259	272	333	449	479
	2	SG 038	290	301	316	406	622	661
	3	SG 039	351	381	422	513	778	859
	4	SG 040	430	450	513	643	911	1039
TWO WAY WITH OFF 	1	SG 151	257	269	284	307	434	580
	2	SG 152	283	301	406	422	596	877
	3	SG 153	366	401	562	643	727	1173
	4	SG 154	433	465	778	810	877	1450
THREE WAY WITH OFF 	1	SG 080	333	351	381	393	633	694
	2	SG 080	383	406	406	451	661	811
	3	SG 100	406	580	658	686	940	1222
	4	SG 131	580	694	795	890	1270	1483
FOUR WAY WITH NO OFF 	1	SG 050	337	345	383	401	630	793
	2	SG 070	401	414	465	513	713	921
	3	SG 090	433	630	732	826	972	1286
	4	SG 121	581	744	890	959	1287	1615




AMMETER SELECTOR SWITCHES

Switching	Pole	Type	Description	Price
	3	SG 10 Amp	To read current through	224
	3	SG 6 Amp	CT's in each Phase and with OFF	191
	3	SG 10 Amp	Direct Reading Ammeter	741
	3	SG 16 Amp	Selector Switches	781
	3	SG 25 Amp	Without CT's	895



V.S.S AND A.S.S. (SLEEK TYPE) VOLTMETER SELECTOR SWITCHES

Switching	Pole	Type	Description	Price
	3	SG 10 Amp	Voltage between Phase with OFF	199
	3	SG 6 Amp	-do-	141
	3	SG 10 Amp	Voltage between Phase to Phase and Phase to neutral with OFF	451
	3	SG 6 Amp	-do-	276
	3	SG 6 Amp	Voltage between Phase to neutral with OFF	263
	3	SG 10 Amp	Voltage between Phase to Phase and Phase to neutral with OFF	451



SGNE MOULDING CASE CIRCUIT BREAKER

Current Rating	Cat No.	Price (Rs.) 10KA (3 POLE)	Price (Rs.) 10KA (3 POLE)
100 A	SGHNE-100	1452	3654
125 A	SGHNE-125	1860	4202
200 A	SGHNE-200	4030	6297
250 A	SGHNE-250	5712	10646



MCCB

SG - Moulded Case Circuit Breaker (M.C.C.B) 415V AC (Confirm to IEC : 947/IS-13947-II)

Current Rating	Cat No.	Price (Rs.) 10KA (3 POLE)	Price (Rs.) 25KA (3 POLE)	Price (Rs.) 35KA (3 POLE)
63A, 80A & 100A	SGMC-100	1685	3417	5205
125 A	SGMC-125	2174	3929	5205
160 A	SGMC-160	4475	5594	8478
200 A	SGMC-200	4710	5887	8924
250 A	SGMC-250	6677	9954	13539
400 A	SGMC-400		12383	16186
630 A	SGMC-630		18997	22054



MCCB Box with Sheet Enclosure, Powder Coated Suitable for 100A/200A, IP-45, IP-67

Current Rating	Cat No.	Size	Price (Rs.)
100/200A	SGMCE-1	305x254x142	1235





HRC FUSE BASE, DIGITAL PANEL METER FOR INDUSTRIAL APPLICATION

Moulded Fuse Base & Carrier Enclosed Type

Confirms to IS : 13703, IEC 269

Description	Cat No.	Std.	Unit Price
Amp.	Nos.	Pkg	(Rs.)
20 Front Connection	SGH-20	10	88
20 Bus bar Connection	SGB-20	10	106
32 Front Connection	SGH-32	10	157
32 Bus bar Connection	SGB-32	10	174
63 Front Connection	SGH-63	10	217
63 Bus bar Connection	SGB-63	10	259
125 Front Connection	SGH-125	3	519
125 Bus bar Connection	SGB-125	3	606
63 Front Connection	SGRF-63	10	119

HRC Fuse base open type (BAKELITE)

Rating	Cat No.	Std.	Unit Price
Amp.		Pkg	(Rs.)
125	SGL-125B	3	150
160	SGS-160B	3	174
250	SGS-250B	3	475
400	SGS-400B	3	677
630	SGS-630B	3	1025

HRC Fuse base open type (DMC)

Rating	Cat No.	Std.	Unit Price
Amp.		Pkg	(Rs.)
125	SGL-125D	3	166
160	SGS-160D	3	192
250	SGS-250D	3	526
400	SGS-400D	3	753
630	SGS-630D	3	1137

HRC Fuse base open type (PORCELAIN)

Rating	Cat No.	Std.	Unit Price
Amp.		Pkg	(Rs.)
160	SGS-160P	3	192
250	SGS-250P	3	526
400	SGS-400P	3	753
630	SGS-630P	3	1137

Ammeter's & Voltmeter's

Standard Range	Unit Price (Rs.)		
	Sq. Flush SR-72	Sq. Flush SR-96	Sq. Flush SR-144
Ammeter's any single range upto 50 Amp.	248	397	569
60-75-80-100 Amp.	276	449	591
150-200 Amp.	285	452	613
above 200-1200A	337	547	729
Voltmeter's 15-300V	248	397	569
500-600V	265	433	587

Note : Direct Reading Meters 20% Shall be Charged extra. (60A & Above)

Moving Coil DC meters

Standard Range	Unit Price (Rs.)		
	Sq. Flush SR-72	Sq. Flush SR-96	Sq. Flush SR-144
1A-30A (With internal Shunt)	499	663	850
40-1500A (Without Shunt)	499	663	850
MILLI AMMETERS			
0-1 to 500mA	590	724	1036
VOLTMETERS			
500V to 600V	365	484	811

Digital Ammeter, Voltmeter

Standard Range	Unit Price (Rs.)
96X96	Sq. Flush SR-96
Digital Voltmeter (0-1000V)	1174
Digital Ammeter 10/5, 20/5	
30/5 (Direct) & All suitable ranges for C.T. Operated Meters (5 to 5000/5)	1174
Frequency Meter	658

FORWARD REVERSE UNBREAKABLE WITH HOUSING

Conform to IS : 13947-3 AC-3

	Amp	Volt	Cat No.	Price
	20Amp.	440 Volt	SG 20 RF	381





CAM OPERATED ROTARY SWITCH

FORWARD REVERSE SWITCH CAM OPERATED

OFF F O R	Amp.	16 Amp.	25 Amp.	32 Amp.	40 Amp.	63 Amp.
	Cat No.	SG 211	SG 211	SG 211	SG 211	SG 211
	Price (Rs.)	404	420	484	1121	1431

Note : Housing also available for reverse-forward switch SG-211 (upto 32A), MRP for Housing Rs. 209/- Extra.



SWITCHES & AMPS.

Switching	Pole	Cat No.	Price (Rs.)	Switching	Pole	Cat No.	Price (Rs.)
ON-OFF 	1	SG 001	100	7 WAY WITH OFF 	1	SG 064	257
	2	SG 002	125		2	SG 084	446
	3	SG 003	135		3	SG 104	596
	4	SG 004	163				
2 WAY WITH NO OFF 	1	SG 037	125	7 WAY WITH NO OFF 	1	SG 053	257
	2	SG 038	162		2	SG 073	450
	3	SG 039	194		3	SG 093	618
	4	SG 040	244				
2 WAY WITH OFF 	1	SG 025	127	8 WAY WITH NO OFF 	1	SG 054	267
	2	SG 026	163		2	SG 074	483
	3	SG 027	194		3	SG 094	659
	4	SG 028	245				
3 WAY WITH NO OFF 	1	SG 049	141	8 WAY WITH OFF 	1	SG 065	296
	2	SG 069	192		2	SG 085	489
	3	SG 089	294				
	4	SG 120	360				
3 WAY WITH OFF 	1	SG 060	143	9 WAY WITH NO OFF 	1	SG 055	315
	2	SG 080	197		2	SG 075	526
	3	SG 100	296				
	4	SG 131	365				
4 WAY WITH NO OFF 	1	SG 050	141	9 WAY WITH OFF 	1	SG 066	314
	2	SG 070	229		2	SG 086	594
	3	SG 090	306				
	4	SG 121	428				
4 WAY WITH OFF 	1	SG 061	176	10 WAY WITH OFF 	1	SG 056	332
	2	SG 081	285		2	SG 076	573
	3	SG 101	405				
	4	SG 132	478				
5 WAY WITH NO OFF 	1	SG 051	191	10 WAY WITH NO OFF 	1	SG 067	526
	2	SG 071	329		2	SG 087	66
	3	SG 091	450				
5 WAY WITH OFF 	1	SG 062	199	11 WAY WITH NO OFF 	1	SG 057	375
	2	SG 082	327		2	SG 077	651
	3	SG 102	474				
6 WAY WITH NO OFF 	1	SG 052	199	11 WAY WITH OFF 	1	SG 068	375
	2	SG 072	378		2	SG 088	651
	3	SG 092	501				
6 WAY WITH OFF 	1	SG 063	258	12 WAY WITH NO OFF 	1	SG 058	381
	2	SG 083	446		2	SG 078	700
	3	SG 103	597				



MCB

"C" Series_Motor Circuit (Confirm to IS : 8828-1996 IEC)

Rating Amp.	SP Price	SP-N Price	DP Price	TP Price	TP-N Price	FP Price
0.5-5	144	410	469	667	921	936
6-32	101	352	383	576	793	803
40	169	462	496	819	997	1029
63	194	520	568	924	1111	1154

ISOLATOR'S (240/415V, 50Hz. AC) IS : 13947-3

Rating Amp.	SP Price	DP Price	TP Price	FP Price
40	112	283	417	574
63	141	317	524	638
100	177	388	623	739

MCB ENCLOSURES

(Sheet steel, powder coated for SG MCB's)

No. of Pole	Cat No.	Price
1	SGDBS-1	152
2	SGDBS-2	152
3	SGDBS-3	203
4	SGDBS-4	203

MCB ENCLOSURES

MCB Enclosures (for Cutouts) Plastic Enclosures Fited with Din Rail for MCB'S

No. of Pole	Cat No.	Price
1 & 2	SGPD 1 & 2	60
3 & 4	SGPD 3 & 4	104

MCB's DISTRIBUTION BOARDS

(Sheet Steel, Phosphatised, Powder Coated Dbs with Bus Bar, Neutral Link Earth Bar & Din Rail (Confirm to IS : 13032-1991 BS : 5486-1986 for MCB's)

SINGLE PHASE No. OF Ways	SINGLE DOOR		DOUBLE DOOR	
	Cat No.	Price	Cat No.	Price
4	SPN-SD-4	303	SPN-DD-4	608
6	SPN-SD-6	339	SPN-DD-6	685
8	SPN-SD-8	400	SPN-DD-8	1007
10	SPN-SD-10	467	SPN-DD-10	1059
12	SPN-SD-12	521	SPN-DD-12	1132
16	SPN-SD-16	704	SPN-DD-16	1337

THREE PHASE No. OF Ways	SINGLE DOOR		DOUBLE DOOR	
	Cat No.	Price	Cat No.	Price
4	TPN-SD-4	1058	TPN-DD-4	1763
6	TPN-SD-6	1132	TPN-DD-6	2107
8	TPN-SD-8	1287	TPN-DD-8	2338
12	TPN-SD-12	1693	TPN-DD-12	3165





FUSE SWITCH, CHANGE OVER, SWITCH BUSBAR

SWITCH DISCONNECTOR FUSE UNIT

Three Pole & Neutral, Front Operated Panel Mounting (HRC FUSE TYPE)

Rating Amp.	Cat No.	Rate Per Unit (Rs.) Open Execution W/o Fuses	Cat No.	Rate Per Unit (Rs.) In Sheet Steel Encl. W/o Fuses
	Open Execution		In Sheet Steel Encl.	
32 Amp.	SG10 32	1525	SGSE 32	2555
63 Amp.	SG10 63	2031	SGSE 63	3088
100 Amp.	SG10 100	4130	SGSE 100	5269
125 Amp.	SG10 125	4398	SGSE 125	6256
160 Amp.	SG10 160	5482	SGSE 160	6643
200 Amp.	SG10 200	7155	SGSE 200	9199
250 Amp.	SG10 250	8837	SGSE 250	10829
315 Amp.	SG10 315	10400	SGSE 315	12419
400 Amp.	SG10 400	12902	SGSE 400	14918
630 Amp.	SG10 630	21151	SGSE 630	24024



HOOTER, BUZZER, OIL TIGHT LIMIT SWITCH TYPE SGL

INDUSTRIAL HOOTER & SOLID STATE BUZZER
RANGE - 50 MTR., SOUND LEVEL : 95DB - 120 DB

DESCRIPTION	CAT NO.	PRICE	PACK
INDUSTRIAL HOOTER AC			
FOR : 220V AC	SG-IH-1	660	1
110V AC	SG-IH-2	660	1
24V AC	SG-IH-3	660	1
INDUSTRIAL HOOTER DC			
FOR : 220V DC	SG-IH-1D	660	1
110V DC	SG-IH-2D	660	1
48V DC	SG-IH-3D	660	1
24V DC	SG-IH-4D	660	1
SOLID STATE BUZZER AC Three Tone			
12V AC	SGB-12A	670	1
24V AC	SGB-24A	670	1
48V AC	SGB-48A	670	1
110V AC	SGB-110A	670	1
220V AC	SGB-220A	670	1
440V AC	SGB-440A	670	1
SOLID STATE BUZZER DC			
12V DC to 220V DC	SGB-120	670	1



OIL TIGHT LIMIT SWITCH TYPE SGL

STANDARD OIL TIGHT LIMIT SWITCH TYPE SGL

DESCRIPTION	CAT NO.	PRICE
STANDARD OIL TIGHT LIMIT SWITCH TYPE SGL WITH 1 NO + 1 NC CONTACTS		
Roller Lever 38 mm long with 19 mm Dia. 8 mm wide Metal Roller	SGL-1	854
Roller Lever 76.2 mm long with 19 mm Dia. 8 mm wide Metal Roller	SGL-2	854
Adjustable Roller Lever from 32 mm to 82.5 mm with 19 mm Dia. 8 mm wide Metal Roller	SGL-A	854
Top Push Roller Operated with 11.1 mm Dia. 4 mm wide Metal Roller	SGL-TPR	854
Top Push Button Operated Adjustable upto 8 mm	SGL-TPBA	854
General Purpose Angular Roller Limit Switch	SGL-GS	382



PLUG & SOCKET SHEET STEEL ENCLOSURES

Powder Coating with Neutral Link (without MCB) Plug & Socket

Amp. Rating	VOLT	CAT NO.	PRICE
10 Amp.	250V	SG-PS/SP	551
20 Amp.	250V	SG-PS/SP2	620
20 Amp.	440V	SG-PS/TP2	1140
30 Amp.	440V	SG-PS/TP3	1453
63 Amp.	440V	SG-PS/TP63	4869
63 Amp. ACMT Box			
Powder Coating with Neutral Link without MCB			1341



PLUG & SOCKET

Cat No.	IP	AMP/PIN	DESCRIPTION	PRICE (Rs.)
SGP013	IP44	16A 3P	Plug	232
SGS113	IP44	16A 3P	Wall Mount Socket	469
SGC213	IP44	16A 3P	Connector	364
SGS313	IP44	16A 3P	Panel Mount Socket	282
SGP015	IP44	16A 5P	Plug	328
SGS115	IP44	16A 5P	Wall Mount Socket	519
SGC215	IP44	16A 5P	Connector	418
SGS315	IP44	16A 5P	Panel Mount Socket	455
SGP023	IP44	32A 3P	Plug	387
SGS123	IP44	32A 3P	Wall Mount Socket	568
SGC223	IP44	32A 3P	Connector	455
SGS323	IP44	32A 3P	Panel Mount Socket	483
SGP025	IP44	32A 5P	Plug	465
SGS125	IP44	32A 5P	Wall Mount Socket	619
SGC225	IP44	32A 5P	Connector	592
SGS325	IP44	32A 5P	Panel Mount Socket	551
SG0352	IP65	63A 5P	Plug	1866
SG1352	IP65	63A 5P	Wall Mount Socket	2266
SG2352	IP65	63A 5P	Connector	2412
SG4352	IP65	63A 5P	Panel Mount Socket	2048



ACTUATORS

Description	Colours	Cat No.	Price	Pack
FLUSH KNOB Plastic Body	R,G,Y,BL,B,W	SG-AFPL	46	20
FLUSH KNOB	R,G,Y,BL,B,W	SG-AF	55	20
PROJECTED KNOB	R,G,Y,BL,B	SG-AP	69	20
BOOTED KNOB	R,G,Y,BL,B	SG-AB	85	20
MUSHROOM KNOB	R,G,B	SG-AM	81	10
JUMBO MUSHROOM KNOB	R,G,B	SG-AJM	103	20
MUSHROOM STAY PUT (Press to Lock. Turn to Reset)	RED	SG-AMS	110	10
JUMBO STAY PUT MUSHROOM (Press to Lock. Turn to Reset)	RED	SG-AJMS	167	10
SELECTOR TWO POSITION	BLACK	SG-A2	155	10
SELECTOR THREE POSITION	BLACK	SG-A3	155	10
SELECTOR SPRING RETURN 2 POSITION	BLACK	SG-SR2	180	10
SELECTOR SPRING RETURN 3 POSITION	BLACK	SG-SR3	194	10

TWIN/LUMINOUS ACTUATOR

TWIN ACTUATOR (FLUSH RED BUTTON)	R,GSG-10	133	20
LUMINOUS TWIN ACTUATOR	R,GSG-TLR	196	10
LUMINOUS TWIN ACTUATOR (Without Resistance)	R,GSG-TL	190	20

KEY LOCKABLE

KEY SELECTOR TWO POSITION	BLACK	SG-A2K	217	10
KEY SELECTOR THREE POSITION	BLACK	SG-A3K	217	10
KEY MUSHROOM LOCKABLE-OFF (Key removable in unpressed position)	RED	SG-AKM-F	245	10
KEY MUSHROOM LOCKABLE-ON (Key removable in pressed position)	RED	SG-AKM-O	231	10
(Press to Lock. Turn to Reset)	RED	SG-AKM-S	231	10

PILOT LIGHTS (SUITABLE FOR 220V, 110V, 60V, 48V & 24V (AC/DC))

PILOT LIGHT without resistance	R,G,A,B,Y,C	SG-AL	113	10
PILOT LIGHT with resistance	R,G,A,B,Y,C	SG-AR	119	10

LED / PILOT / LUMINOUS FLUSH / SELECTOR / BARREL TYPE (suitable for 6V, 12V, 24V, 48V, 60V, 110V, 220V AC / & 440V AC)

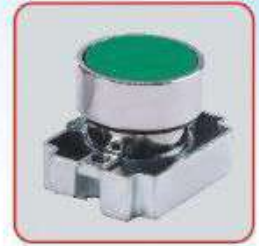
LED PILOT LIGHT	R,G,Y	LED-SGAR	150	10
LED PILOT LIGHT	W,B,C	LED-SGAR	217	10
LED LUMINOUS FLUSH KNOB	R,G,Y	LED-SGLFR	182	10
LED LUMINOUS FLUSH KNOB	W,B,C	LED-SGLFR	252	10
LED LUMINOUS SELECTOR KNOB	R,G,Y	LED-SGLSR	257	10
LED LUMINOUS SELECTOR KNOB	W,B,C	LED-SGLS	328	10
LED BARREL TYPE	R,G,Y	LED-SGBR	76	10
LED BARREL TYPE	W,B,C	LED-SGBR	156	10

Note : Rs. 15/- Shall be charged extra for Leakage Voltage Glow Protection (LVGP) Circuit fitted in LED indicator modules.

LUMINOUS

LUMINOUS FLUSH KNOB (with Lamp holder assembly & BA9S bulb but without resistance & without contact block)	R,G,A,B,C,Y	SG-LF	134	10
LUMINOUS FLUSH KNOB (with Lamp holder assembly, with resistance & BA9S bulb but without contact block)	R,G,A,B,C,Y	SG-LFR	139	10
BOOTED LUMINOUS FLUSH KNOB (with Lamp holder assembly, with resistance & BA9S bulb but without contact block)	R,G,A,B,C,Y	SG-BLFR	175	10
LUMINOUS SELECTOR KNOB (with Lamp holder assembly, & BA9S bulb but without resistance & without contact block)	R,G,ABL	SG-LS	220	10
LUMINOUS SELECTOR KNOB (with Lamp holder assembly, with resistance & BA9S bulb but without contact block)	R,G,ABL	SG-LSR	227	10

Note : DC LED/PILOT LIGHT PRICE RS. 10/- EXTRA* Denotes the various colour of knobs & Lenses * R-Red, G-Green, A-Amber, BL-Black, B-Blue, Y-Yellow, W-White, C-Clear * See Accessories on Page No. 8





LIMIT SWITCHES, PLUG & SOCKET

LIMIT SWITCHES WITH 2 CONTACTS (OPEN TYPE)

With push-rod and Plastic Protective cover

ARRANGEMENT	CONTACT	CAT NO.	PRICE
Normal	1NO 1NC	SGS 3020-0A	150
Snap Action	1NO 1NC	SGS 3020-1A	168

SPARE FOR THE SGL LIMIT SWITCHES

DESCRIPTION	CAT NO.	PRICE
30/35/38 mm long lever	SGL-S1	142
76.2 mm long lever	SGL-S2	198
50 mm long lever	SGL-S3	181
Adjustable lever	SGL-SLA	198
Fork type lever (In line)	SGL-SLF	281
Fork type lever (Offset)	SGL-SLFO	281
BASIC ELEMENT		
Basic Switch Element	SGL-SE	327
OPERATING HEADS		
For Side Plunger Button type	SGL1-SHSPB	362
For Top Plunger Button type	SGLA-SHTPB	321



SGME Limit Switch

Cat No.	Price (Rs.)
SGME 8104	421
SGME 8108	421
SGME 8111	421
SGME 8112	421

Cat No.	Price (Rs.)
SGME 8107	430
SGME 8122	430
SGME 8166	430
SGME 8169	430
SGME 9101	430

INDUSTRIAL HEAVY DUTY PLUG & SOCKETS

METAL CLAD PLUGS, SOCKETS

DESCRIPTION	CAT NO.	PRICE	PACK
250V, 2 POLE & EARTH			
10 Amp. Plug	SGP 1	105	30
10 Amp. Socket with Cap	SGS 1	110	30
20 Amp. Plug	SGP 2	110	20
20 Amp. Socket with Cap	SGS 2	120	20
20 Amp. Conduit Box	SGC 2	110	20
440V, 3POLE & EARTH			
20 Amp. Plug	SGP 3	156	20
20 Amp. Socket with Cap	SGS 3	165	20
20 Amp. Conduit Box	SGC 3	136	20
30 Amp. Plug	SGP 4	310	10
30 Amp. Socket with Cap	SGS 4	330	10
30 Amp. Conduit Box	SGC 4	165	10
63 Amp. 440V Metalclad Plug	SGP-63	1732	01
63 Amp. 440V Metalclad Socket	SGS-63	1840	01

S.S. TYPE PLUG & SOCKET UPTO 12 PIN 32 A-500V IP55, IP65

	3 PIN	4 PIN	5 PIN	12 PIN
PLUG	410	436	463	841
SOCKET	410	436	463	841

NEW : Empty box for S.S. TYPE PLUG & SOCKET Rs. 1133/-



