



BASIC METERS

Basic VAF meters for **reliable** and **cost-effective** panels.

SIMULTANEOUS DISPLAY OF VAF PARAMETERS FOR EASY VERIFICATION.

- True RMS
- Average & phase wise information
- Measurement range 20mA to 6A
- Programmable primary / secondary for both Voltage & Current making wider range of operations – stocking becomes simple
- **Universal Auxiliary input** 40-300V AC/DC

QUICKLY IDENTIFY POTENTIAL ISSUES SUCH AS OVERLOADING OR UNDERLOADING.

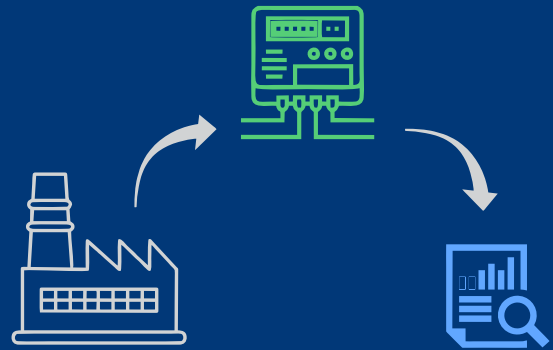
- Auto-scrolling
- **Auto-scaling** of decimal point
- Low PT. CT burden
- **Alerts for 120% Over Voltage, 80% Under Voltage & 100% Over Current** in 3 row models
- **Voltage & Current terminal on opposite side** for safety and easy wiring

EASY INDICATION OF POWER SYSTEM AVAILABILITY.

- Basic meter in **slim construction** (30mm depth)
- **Patented alpha numeric display** 4 Digits, 3 row, 14 mm height
- Simultaneous sampling of Volts & Amps
- RPM measurement for generator in SL 1300



FOR COST EFFECTIVE AND EASY INSTALLATION WITH FULL PROGRAMMABILITY AT SITE.



VAF + PF Meter

SLEEK (SL 1300)



- Universal Auxiliary (40-300V AC/DC) supply
- Universal Voltage Input (80-550V AC)
- Current Secondary (20mA to 6A)
- Average and Phase wise measurement
- Voltage and current terminals are opposite to each other for safety and easy wiring
- Patented alpha numeric display for better visibility

Ammeter

SLEEK (SL A/3A/1330) & μ ALPHA (μ A A/3A)



- Universal auxiliary input of 40 - 300V AC/DC
- Direct measurement upto 60A Hanging CT
- Current Average & Phase wise
- Field programmable CT primary and Secondary
- Available in 96 x 96mm and 96 x 48mm

Voltmeter

SLEEK (SL V/3V/1340) & μ ALPHA (μ A V/3V)



- Universal Auxiliary (40-300V AC/DC) supply
- Average and phase wise measurement
- Available in 96 x 96mm and 96 x 48mm
- Frequency can be measured

DC Voltmeter / Ammeter

SLEEK (SL) & μ ALPHA (μ A)



- 4 digits with auto-scaling makes the reading easier and provides a better resolution
- Field programmable Offset value or Full scale
- Voltage and Current terminal on opposite side for safety and easy wiring
- DC Vin - 10V / 48V / 100V / 500V / 800V, DC Ain - 50mV to 100mV (factory set)
- DC 0 to 20mA / 4 to 20mA analog input options- Programmable at site

Frequency Meter

SLEEK (SL) & μ ALPHA (μ A Hz)



- Displays wider range of frequency 40 - 65 Hz
- Higher accuracy class 0.2
- Universal auxiliary input of 40 to 300V AC/DC for
- 96x48mm size (Micro series)

Counter Type Energy Meter

GenDuos & Smart 3E



- First time In India: **Dual display, counter & LED**- Eliminating the use of multiple meters- Reduces cost and simplifies panel wiring
- Monitors 5 key electrical parameters of the genset.
- Simultaneous display of kWh and V / A / Hz for GD 3110
- Common CT, PT settings for all parameters
- Programmable for single phase & three phase applications
- Reverse lock option
- Sealing option available on request

Model Selector Table

	SL A	SL V	SL 3A	SL 3V	SL 1330	SL 1340	SL 1300	SL ADC	SL VDC	SL Hz	µALPHA A	µALPHA V	µALPHA 3A	µALPHA 3V	µALPHA ADC	µALPHA VDC	µALPHA Hz	SMART 3E	GD 3110
ACCURACY CLASS																			
CLASS 1.0 (Default)	✓	✓	✓	✓	✓	✓	✓	✓	✓		✓	✓	✓	✓	✓	✓		✓	✓
CLASS 0.5 (Optional)	✓	✓	✓	✓	✓*	✓*	✓	✓	✓		✓*	✓*	✓*	✓*				✓*	✓*
CLASS 0.2										✓							✓		
INSTANTANEOUS																			
V		✓		✓		✓	✓					✓		✓					✓
V1 V2 V3 V12 V23 V31				✓		✓	✓							✓					✓
A	✓		✓		✓		✓				✓		✓						✓
A1 A2 A3			✓		✓		✓						✓						✓
Hz				✓		✓	✓			✓				✓			✓		✓
RPM							✓												
PF PF1 PF2 PF3							✓												
kWh																		✓	✓
DC Volts									✓							✓			
DC Amps								✓							✓				
OPTIONAL																			
Communication - RS485							✓												
60A Hanging CT	✓		✓				✓				✓		✓						
100A Hanging CT							✓												
Tamper Proof																		✓	✓

* MOQ On Request

Note : DC measurement Accuracy Class 1.0FS, Class 0.5FS (optional)

Technical Specification

Specification	Description
Accuracy:	Class 1.0 (Default) - EC 62053-21, Class 0.5 (Optional) - EC 62053-22. Frequency 0.2% default.
Sensing/ Measurement:	True RMS, 1 Sec. update time
Input Voltage:	4 Voltage inputs (V1 V2 V3 VN); (Range 80 to 550V LL) PT primary programmable upto 999kV Nominal 415V LL <i>Burden:</i> 0.2VA Max. per phase
Input Frequency:	45 - 65 Hz
Input Current:	Current inputs (A1 A2 A3) 20mA - 6A (Field configurable 1A or 5A). Primary programmable up to 99kA <i>Overload:</i> 10A max continuous, 50A max for 3 Sec <i>Burden:</i> 0.2VA Max. per phase.
Aux-Supply (control power):	40-300V AC/DC. 24V DC optional for selected models on request (MOQ). <i>Burden:</i> 4 VA Max
Protection Class: Ingress protection	IP 51 (IP 54 front facia optional) & Double Insulation (As per IEC 61010-1)
Display resolution:	4 digits display with 14mm height
Communication: Only for SL 1300	Modbus RTU & RS485 Baud rate: 2400bps to 38.4k bps (Preferred 9600) Isolation: 2000 volts AC isolation for 1 minute between communication and other circuits.
Weight:	Size 96 x 96mm - Unpacked: 275 gms, Packed: 350 gms Size 96 x 48mm - Unpacked: 250 gms, Packed: 325 gms
Torque:	1 N-m
Wire gauge:	11 AWG
Operating Temperature:	-10°C to + 55°C (14°F to 131°F).
Storage Temperature:	-25°C to + 70°C (-13°F to 158°F)

Mechanical Specification

